



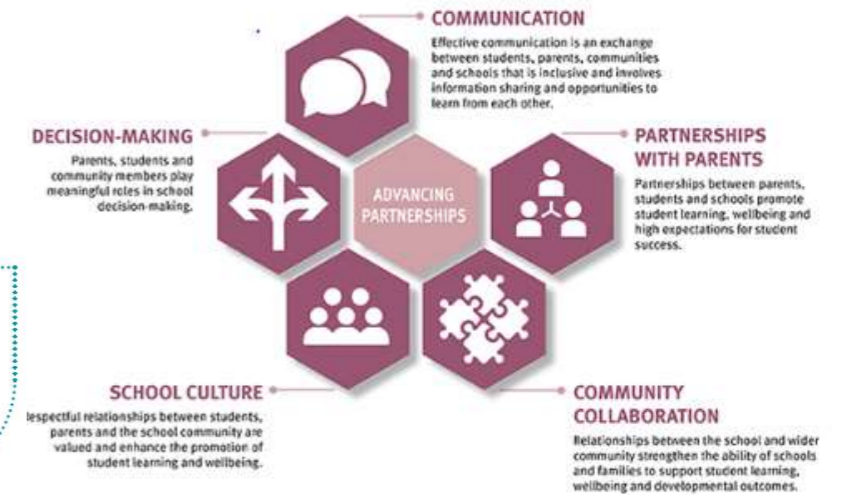
Thallon State School

Staff and Student Wellbeing Framework

Parent and Community Engagement Framework



Wellbeing – our approach



Wellbeing is a whole school responsibility

Thallon State School's staff- Principal, Teachers, Specialist Teachers, Teacher Aides and Ancillary Staff are committed to

- ✓ creating safe, supportive and inclusive learning environment
- ✓ Building the capability of staff, students and the school community
- ✓ Developing strong systems for early intervention

Our young people are growing up in a world driven by new technologies and economic globalisation. Their future means they need a new set of cognitive, social and emotional skills for success.

Healthy, confident and resilient young people who can successfully navigate a more complex world are vital for Queensland's future.

We know that a supportive environment that combines a focus on wellbeing with a focus on learning is optimal — without one, the other will not happen. Responding to individual and group differences, promoting collaborative learning, connecting to the hearts and minds of every student, and teaching students how to manage their wellbeing, are just some of the ways our teachers are making sure students thrive.

Thallon State School will continue to provide inclusive environments that nurture the wellbeing of all students so they become resilient lifelong learners who respond positively to their changing world and pursue their passions with confidence.

Our Vision

We create open-minded and articulate learners who are accepting of all and capable of making infinite, life-long choices.

Student Wellbeing

Psychological	Personal	Physical	Social	Cognitive
<ul style="list-style-type: none"> ✓ GO services ✓ Chappy ✓ Student of the Week, Principal Award ✓ Wombats ✓ 10 point cards ✓ Reward boxes and ✓ Trauma and Poverty Informed Practise ✓ Student Protection and Student Code of Conduct Training for staff ✓ Diversity and Inclusion Policy 	<ul style="list-style-type: none"> ✓ Social and emotional program- YCDI ✓ PBL focus of the week on parade ✓ Student Leaders ✓ Student Council ✓ Awards Night ✓ Public Speaking ✓ Student Protection Processes 	<ul style="list-style-type: none"> ✓ District, Regional sport trials ✓ Gala sports days ✓ PE ✓ Before school games program ✓ Tennis Comp ✓ Sport skills ✓ Prep Vision and Hearing Screening 	<ul style="list-style-type: none"> ✓ School disco ✓ School movie night ✓ Free dress day ✓ Gala sports days ✓ Camp ✓ Swim camp ✓ Under 8s day ✓ Cluster Enrichment Days 	<ul style="list-style-type: none"> ✓ Small classes ✓ Enrichment days ✓ STEM ✓ Learning support ✓ Individual groups ✓ P-6 curriculum ✓ Speech language Pathologist ✓ Every Day Counts – Attendance

Staff Wellbeing

Physical	Psychological	Financial	Social and Community Engagement	Occupational
<ul style="list-style-type: none"> ✓ Flu Vaccines ✓ RAIS ✓ Community Garden-fresh fruit and vegetables ✓ Regular informal discussions ✓ Hearing screening ✓ WH&S Initiatives – strategically placed signs 	<ul style="list-style-type: none"> ✓ Regular Staff Morning Teas ✓ Random Acts of Kindness ✓ Employee Assistance Program (lifeworks) ✓ SGO support ✓ Regular informal debriefing ✓ Special occasion celebrations 	<ul style="list-style-type: none"> ✓ Access to Professional Development supported ✓ Provision of resources to support staff wellbeing / work conditions ✓ Forwarding emails to staff via generic email list ✓ Remserv ✓ Q Super ✓ Budget allocation 	<ul style="list-style-type: none"> ✓ Links with community organisations ✓ Liaisons with community groups ✓ Opportunities for community groups to be actively involved ✓ Cluster Camps ✓ Community service (ICPA, Cricket Club, CWA etc.) ✓ Principal Cluster Meetings 	<ul style="list-style-type: none"> ✓ Performance and development plans ✓ Student Free Days and Cluster Planning days ✓ Coaching and Mentoring ✓ Career planning and transitioning ✓ Mentoring ✓ Support to access PD/ Resources ✓ Union support and programs (organiser visits)

Parent and Community Engagement

Communication	Partnerships with Parents	Community Collaboration	Decision-making	School Culture
<ul style="list-style-type: none"> ✓ School Sign ✓ School Website— www.thallonss.eq.edu.au ✓ Fortnightly Newsletter ✓ Facebook Page ✓ Learning Snapshot ✓ Digital contact via email, phone, What's App, Blackboard ✓ Semester Report Cards 	<ul style="list-style-type: none"> ✓ Prep Orientation –Term 4 ✓ Transition for high schools ✓ School readiness and capacity building ✓ Parental engagement in school events ✓ Partnerships and Relationships with local businesses ✓ Parent Handbook ✓ Open classrooms– inviting parents to classrooms throughout the year. ✓ 	<ul style="list-style-type: none"> ✓ Community Garden ✓ ANZAC Day march and service ✓ Thallon Progress Association ✓ QCWA ✓ Local visitors ✓ Emergency Services ✓ Queensland Cotton ✓ NRL ✓ Balonne Regional Council ✓ Tour of local area-including the silos 	<ul style="list-style-type: none"> ✓ P&C meetings—2nd Tuesday of each month ✓ Ladies Auxiliary Meeting ✓ Parent teacher interviews– Terms 1 and 3 ✓ Case management meeting ✓ GO, SLP, class teachers, principal, parents 	<ul style="list-style-type: none"> ✓ Swimming ✓ Carnivals ✓ Athletics ✓ Carnivals ✓ Presentation night ✓ Year 6 Leaders Induction ✓ Enrichment Days with Cluster Schools ✓ ANZAC Day Community Service ✓ ANZAC Day School Service ✓ Weekly Parade ✓ Gala Sports Day ✓ NAIDOC Week ✓ Balonne and South West Sport ✓ Swim Camp ✓ Choir ✓ Instrumental Music ✓ Discos ✓ Movie Nights ✓ School Concert ✓ Under 8s Day